

# LED Double-Line Message Centers

## 8 to 64 Characters

## EDV111 Series

EDV111-16160-MC



SECURITY ALERT  
LEVEL: YELLOW

These double-line, multi-color message centers are indoor rated and display 2.25" and 4.8" high characters. They can be controlled using PC software provided or an easy-to-use infrared remote programmer. An optional Ethernet device can be used to network the displays into a facility wide communication system. When networked, individual message centers with a specific address can receive a discrete message or a general broadcast message can be sent to all the message centers in the network.

Included are brackets and hardware that allow for wall or ceiling mounts. The message centers are designed for indoor use in an industrial, retail, government and educational facility or anywhere communication is important. These units can display production goals, company announcements, safety messages and boost employee moral. They can be used in a retail environment to inform customers of product specials, store hours and promotions. Educational facilities can display facility meetings, school activity schedules and student messages.

### Hand Held Remote Programmer

A hand held remote control keyboard with easy to understand programming instructions is supplied with each EDI Message Center. Batteries included.

### Models Include

- Infrared message loader with battery
- Wall or ceiling mount bracket
- 30 ft. RS232 data cable
- PC software

### Accessories

- Ethernet communication device ED2160

### FEATURES

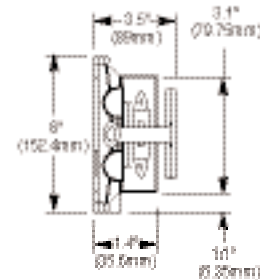
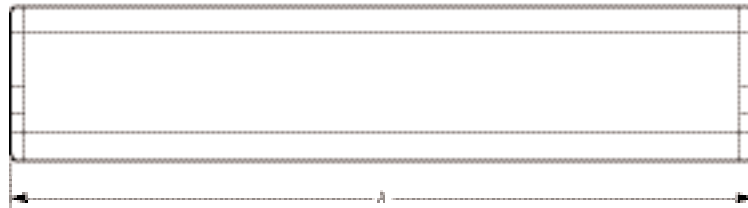
- Stores up to 100 messages
- 100,000 Hr. multi-color LED lamp technology
- Display one line or two lines of text
- Built-in animations
- Built in real-time clock, 12 or 24 hour format
- Addressable
- Password protected
- Wireless remote
- 30 ft. RS232 data cable
- Mounting brackets
- Four display speeds
- 5mm pixel diameter
- 160 degree viewing angle
- Runs on Windows 98/2000/XP
- 120 VAC power supply
- Battery backup saves messages up to 6 months

# MESSAGE CENTERS & ANNUNCIATORS

Electronic Displays, Inc.



## TECHNICAL INFORMATION



Part No.	EDV111-1680-MC	EDV111-16120-MC	EDV111-16160-MC	EDV111-16240-MC	EDV111-16320-MC
<b>Dimension A</b>	26" (660.4mm)	40" (1016mm)	52" (1320.8mm)	73" (1854.2mm)	96" (2438.4mm)

Cat. No.	Power	No. of Characters/Line (max.)	Character size Array	Pixel Size Diameter Pixel Pitch	Pixel Color	Weight	Max. viewing distance w/largest font*	Message Capacity	Operating Environment	Case Dimensions / Display Dimensions
EDV111-1680-MC	120V AC ± 10% 40 watt max.	One line 8 Two lines 16	One line 4.6" Two line 2.0" Array 80 x 16 pixels	.2" (5mm) .08" (20mm)	8 colors and 5 rainbow effects	22 lbs.	200 ft.	100 different messages can be stored & displayed, 28,000 characters	32-120°F 0-95% relative humidity non-condensing	26"L 3"D 6"H/ 4.7"H 24.4"L
EDV111-16120-MC	120V AC ± 10% 40 watt max.	One line 12 Two lines 24	One line 4.6" Two line 2.0" Array 120 x 16 pixels	.2" (5mm) .08" (20mm)	8 colors and 5 rainbow effects	29 lbs.	200 ft.	100 different messages can be stored & displayed, 28,000 characters	32-120°F 0-95% relative humidity non-condensing	40"L 3"D 6"H/ 4.7"H 38.4"L
EDV111-16160-MC	120V AC ± 10% 40 watt max.	One line 16 Two lines 32	One line 4.6" Two line 2.0" Array 160 x 16 pixels	.2" (5mm) .08" (20mm)	8 colors and 5 rainbow effects	35 lbs.	200 ft.	100 different messages can be stored & displayed, 28,000 characters	32-120°F 0-95% relative humidity non-condensing	52"L 3"D 6"H/ 4.7"H 50.4"L
EDV111-16240-MC	120V AC ± 10% 50 watt max.	One line 24 Two lines 38	One line 4.6" Two line 2.0" Array 240 x 16 pixels	.2" (5mm) .08" (20mm)	8 colors and 5 rainbow effects	42 lbs.	200 ft.	100 different messages can be stored & displayed, 28,000 characters	32-120°F 0-95% relative humidity non-condensing	73"L 3"D 6"H/ 4.7"H 70.4"L
EDV111-16320-MC	120V AC ± 10% 100 watt max.	One line 32 Two lines 64	One line 4.6" Two line 2.0" Array 320 x 16 pixels	.2" (5mm) .08" (20mm)	8 colors and 5 rainbow effects	49 lbs.	200 ft.	100 different messages can be stored & displayed, 28,000 characters	32-120°F 0-95% relative humidity non-condensing	96"L 3"D 6"H/ 4.7"H 94.4"L

\*Seven fonts available including wide, bold and international character sets.

Electronic Displays, Inc.



135 S. Church Street • Addison, IL 60101

Phone: 630-628-0658 • Toll-Free: 800-367-6056 • Fax: 630-628-0936

[www.electronicdisplays.com](http://www.electronicdisplays.com)