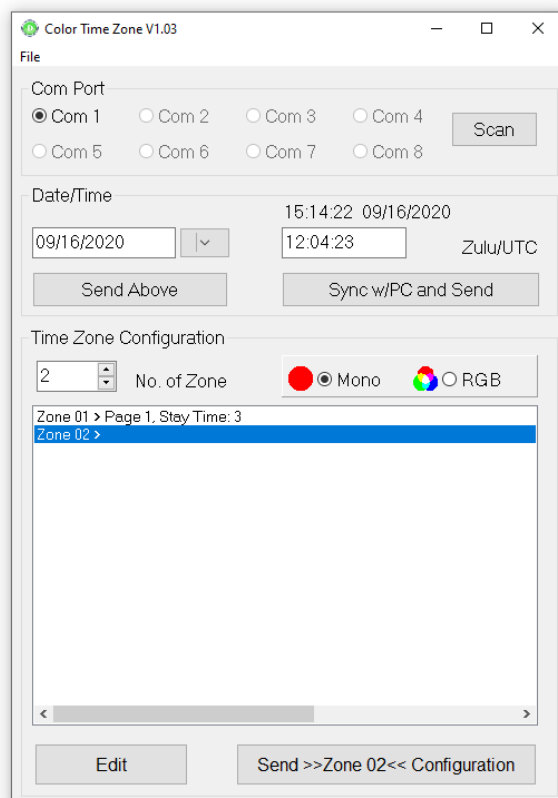




ELECTRONIC DISPLAYS INC.
135 S. CHURCH STREET
ADDISON, ILL. 60101
www.electronicdisplays.com

Instructions for Time Zone Programming Software RGB and Monochrome Models V. 1.03

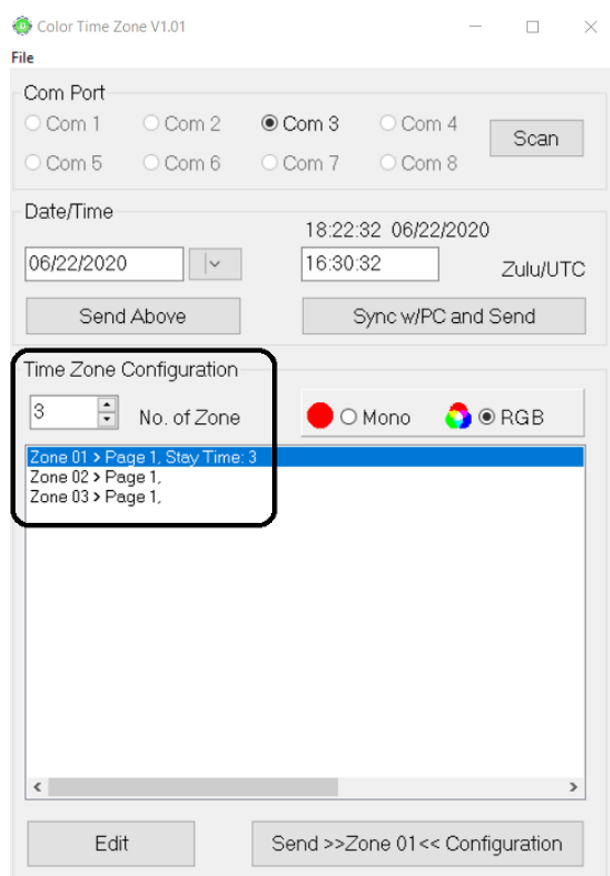
1. Download USB driver at <https://roboindia.com/tutorials/CH340-usb-to-serial-driver-installation>
2. Install Color Time Zone software at <http://edisupport.helpserve.com/Knowledgebase/Article/View/208/0/color-tza-software>
3. Connect the USB to a computer and open the V. 1.03 Color Time Zone software. It should look like the image below.



4. Click the 'Scan' button located in the upper right corner of the window. This will search for the USB device. **NOTE: USB detection is crucial.**

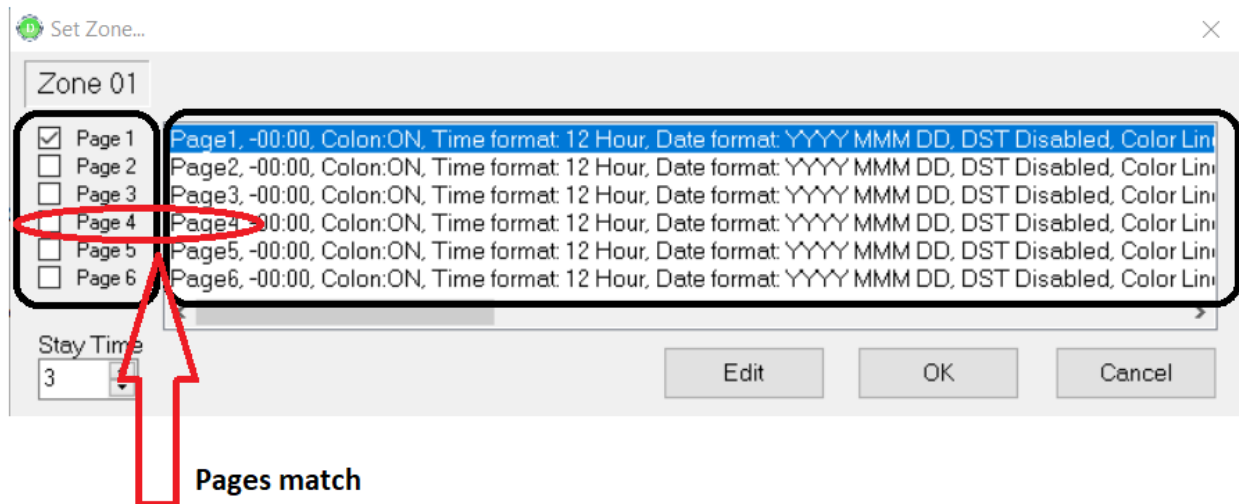
5. In the Time Zone Configuration menu, click the drop-down menu next to 'No. of Zone'. Select the number of time zone fields you have in your display.

6. You will see a menu like the one below with the selected number of fields listed as Zone 01, Zone 02, Zone 03, and so on. The "No. of Zone" is the address of each of the time zones in your model. For example, from left to right, Zone 1 is address "1" / Zone 2 is address "2", etc.



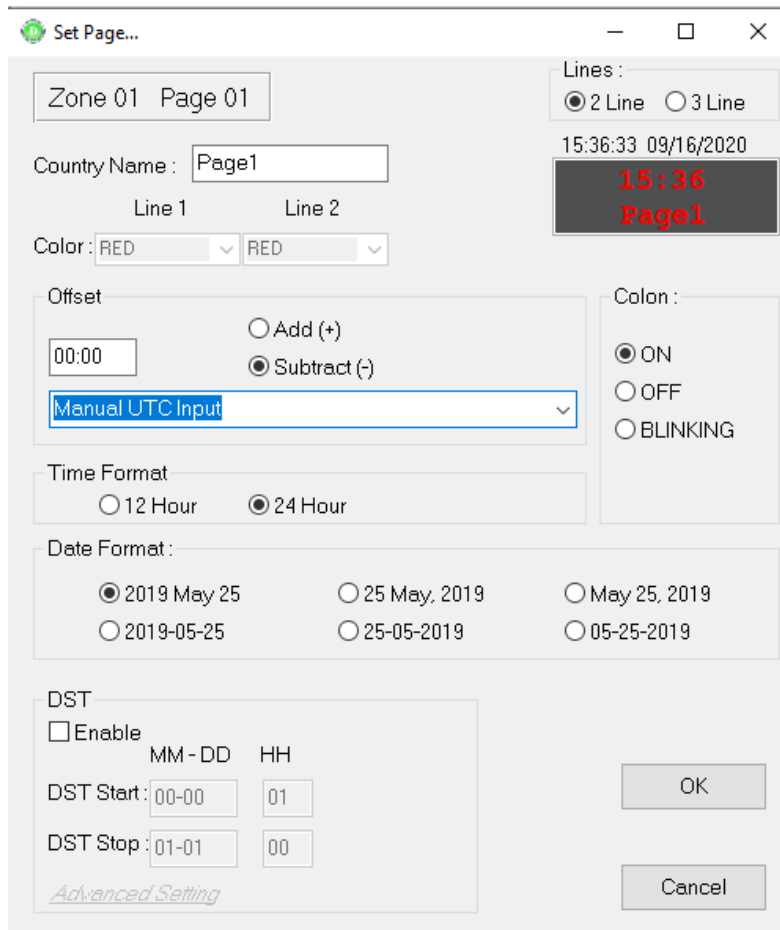
7. To edit the location, time, and daylight savings time settings, highlight a zone by clicking on it, then click the 'Edit' button located at the bottom of the screen.

8. The zone selection menu will open, and you will see several 'Page' selections available on the left side, with corresponding lines on the right as seen below.



9. The function of multiple pages is for rotating locations and time zones, which will rotate in an interval governed by the Stay Time . If you just wish to have a static location and time, then select only Page 1.

10. Once the select page is highlighted (seen above), click the 'Edit' button which will open the screen shown below.



11. On this menu you may edit the location (**select from the drop-down menu**), time offset, DST settings, and color of the location/time. Line 1 refers to the location color, Line 2 refers to the time color.

12. Click 'Ok' to return to the main menu.

13. Repeat for each time zone field you wish to edit

13. Click the 'Send Zone XX Configuration' for each zone. The zone will update with the new text and time.

14. Done!