

# ***ELECTRONIC DISPLAYS INC.***

135 S. CHURCH STREET  
ADDISON, ILL. 60101

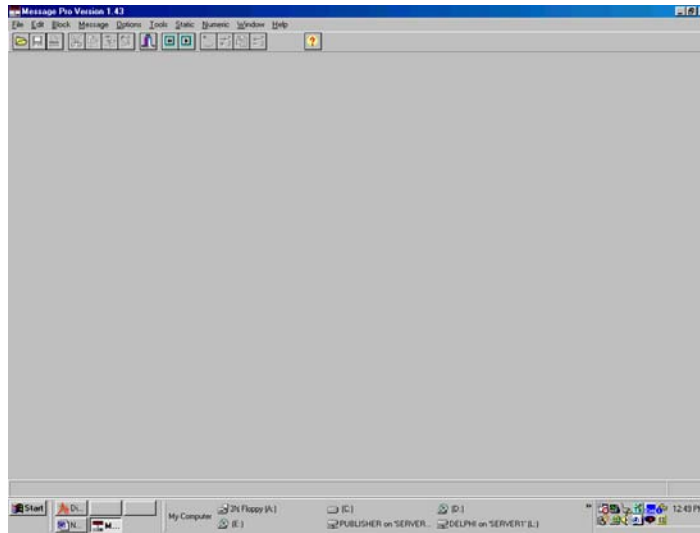
*www.electronicdisplays.com*



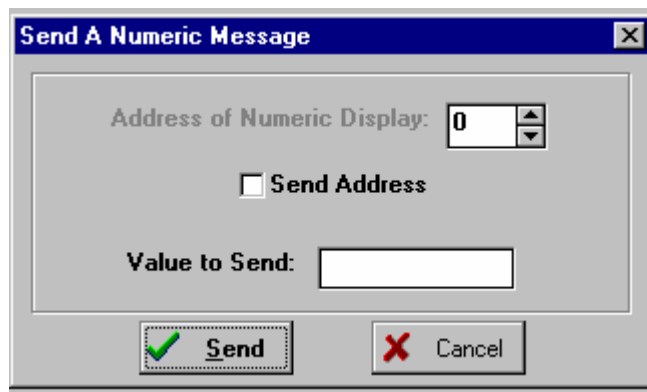
## **MessagePro v. 2.XX for Numeric Displays**

This display receives numeric data via a PC using the **MessagePro** software program provided with it. A software disk is included to download the numeric information. All communication is one-way. Verify in “**SETUP – COMMUNICATIONS**” that the Baud Rate is 1200 and the correct serial port from your PC is activated. If Ethernet communication is used, check the IP box and type in the IP address that is labeled on the back of the display

***STEP 1*** : IN THE MAIN MENU OF Message Pro, CLICK ON “**NUMERIC**”.



***STEP 2*** : A WINDOW WILL POP-UP ASKING FOR THE ADDRESS AND INFORMATION TO BE SENT.

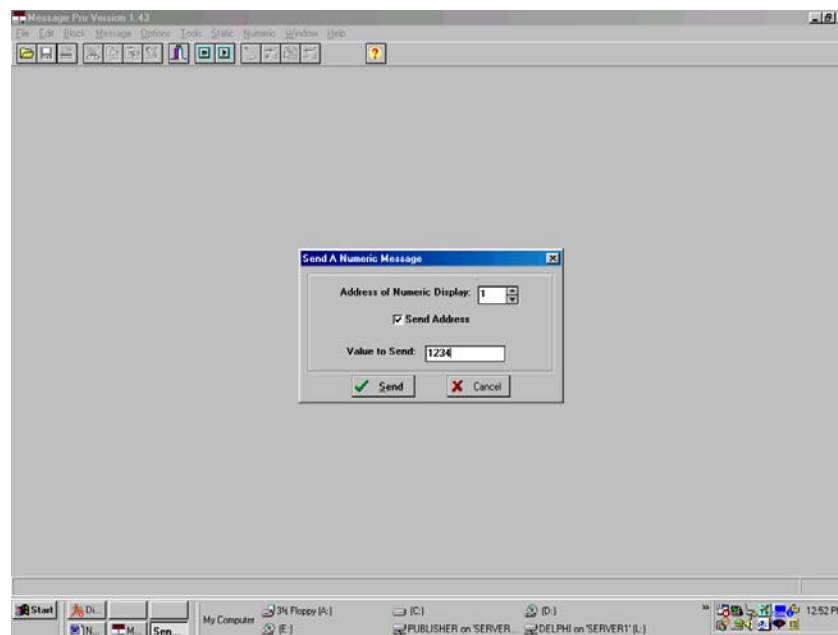


**STEP 3 :** IF ADDRESS ING IS USED, CLICK ON “SEND ADDRESS”.

**STEP 4 :** GO TO “ADDRESS OF NUMERIC DISPLAY” AND SELECT THE LINE TO ACCESS. EACH LINE HAS A **TWO-DIGIT** ADDRESS.

**STEP 5 :** CLICK ON “VALUE TO SEND” AND INPUT THE DATA TO TRANSMIT. SIX CHARACTERS MUST BE ENTERED. USE A <SPACE> FOR LEADING BLANKING ZEROS.

**STEP 6 :** CLICK ON “SEND” TO SEND THE DATA TO THE DISPLAY.



Serial Interface : **RS232** – DISTANCES up to 100’ from the PC.

Serial Interface : **RS422 / RS485** – DISTANCES up to 3000’from the PC .

For Rs422/485: TX+ on PC to RX+ on display

TX- on PC to RX- on display

For answers to any questions on the display, please call (800)-367-6056.

*For More Products Visit Our Website @*  
**[www.electronicdisplays.com](http://www.electronicdisplays.com)**