

# ***ELECTRONIC DISPLAYS INC.***

135 S. CHURCH STREET  
ADDISON, ILL. 60101

[www.electronicdisplays.com](http://www.electronicdisplays.com)



## **EDV3150 : Serial to USB adapter**



# Table of Contents

---

<b>Driver Installation</b> .....	3
<b>Determining Communication Port (Com Port)</b> .....	4
<b>Creating <u>Device Manager</u> Shortcut</b> .....	5
<b>Manual Driver Install</b>	
<b>Windows XP</b> .....	6
<b>Windows Vista,7,8</b> .....	11
<b>Frequently Asked Questions</b> .....	15

## Driver Installation

---

I. Connect the USB male A side of the adapter to the computer and connect the male B (rounded square side) to the adapter.

II. Download the drivers on our support site.

**Direct link:**

<http://edisupport.helpserve.com/Knowledgebase/Article/View/111/17/edv3150-usb-to-serial-adapter-driver>

**Attachment:** “EDV3150 Drivers.zip”

III. Extract the contents of the zip file.

IV. Execute the setup for your operating system.

Operating system	Setup location (in zip file)
Windows XP	\\32 bit drivers\PL-2303 Driver Installer.exe
Windows 7 32-bit Windows 8 32-bit Windows Vista 32-bit	\\32 bit drivers\PL-2303 Vista Driver Installer.exe
Windows Vista 64-bit Windows 7 64-bit Windows 8 64-bit	\\64 bit drivers\EDV3150..64-bit.exe


V. Open up the Windows Device Manager

Operating system	Instructions
Windows XP	Start → Run → type “ <u>devmgmt.msc</u> ” and select <b>OK</b>
Windows 7/Vista	Start → type “ <u>devmgmt.msc</u> ” and press <u>Enter</u> on your keyboard.
Windows 8	Press <b>Windows + S</b> → type “ <u>devmgmt.msc</u> ” in search and press <u>Enter</u> on your keyboard.

- VI. Scroll down to the “**Ports (Com & LPT)**” and look for “**Prolific USB-to-Serial Comm Port (Com#)**” to be listed.

Take note of the Communication port number that is listed in parenthesis (this will need to be set in the communication settings of our display software).

**Notes:**

- If at any time the adapter is moved to a different USB port on the computer, the communication port number needs to be verified again (each USB port on a computer has a different port number). See table of contents on how to make a Device Manager shortcut.
- If there is a yellow  on the icon to the left of the adapter in Device Manager, there is a driver issue. Follow the procedure on how to manually install the drivers.

## Determining Communication Port (Com. Port)

---

### I. Open up Device Manager

Operating System	Instrucitons
Windows XP	<ul style="list-style-type: none"><li>• Click the <b>Start</b> button.</li><li>• Select <b>Run</b><ul style="list-style-type: none"><li>○ Type “<b>Devmgmt.msc</b>”</li><li>○ Select <b>OK</b></li></ul></li></ul>
Windows Vista/7	<ul style="list-style-type: none"><li>• Click the Start/Windows button</li><li>• Type “<b>Devmgmt.msc</b>” in the search<ul style="list-style-type: none"><li>○ Select the ‘<b>devmgmt.msc</b>’ result <u>or</u> press the <b>Enter</b> button on your keyboard</li></ul></li></ul>
Windows 8	<ul style="list-style-type: none"><li>• Press the <b>Windows Icon</b> <u>and</u> <b>S</b> on your keyboard at the same time and release.</li><li>• Type “<b>Devmgmt.msc</b>” in the search<ul style="list-style-type: none"><li>○ Select the ‘<b>devmgmt.msc</b>’ result <u>or</u> press the <b>Enter</b> button on your keyboard</li></ul></li></ul>

### II. Scroll down to the “Ports (COM & LPT)” and expand it by pressing the + sign.

### III. Look for the “**Prolific USB-to-Serial Comm Port (Com#)**” listing.

The Communication port that needs to be set in software is the number in parenthesis. Set this Com Port in the communication settings of the display software.

Note:

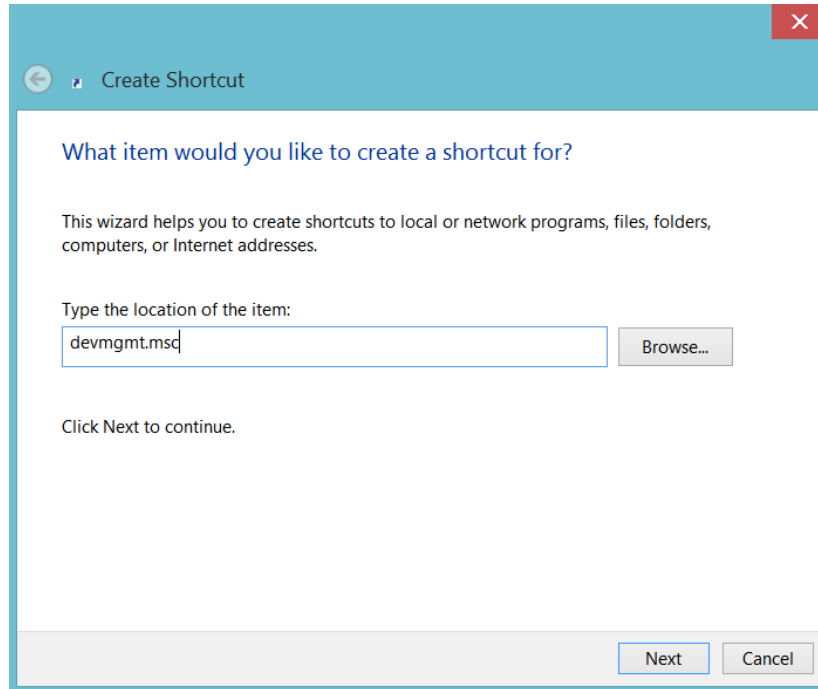
- Each time a different USB port is used with the adapter, the Communication port **will** change and the procedure above needs to be followed to check the port number.

A Device Manager shortcut can be made if the cable will be frequently disconnected (see table of contents).

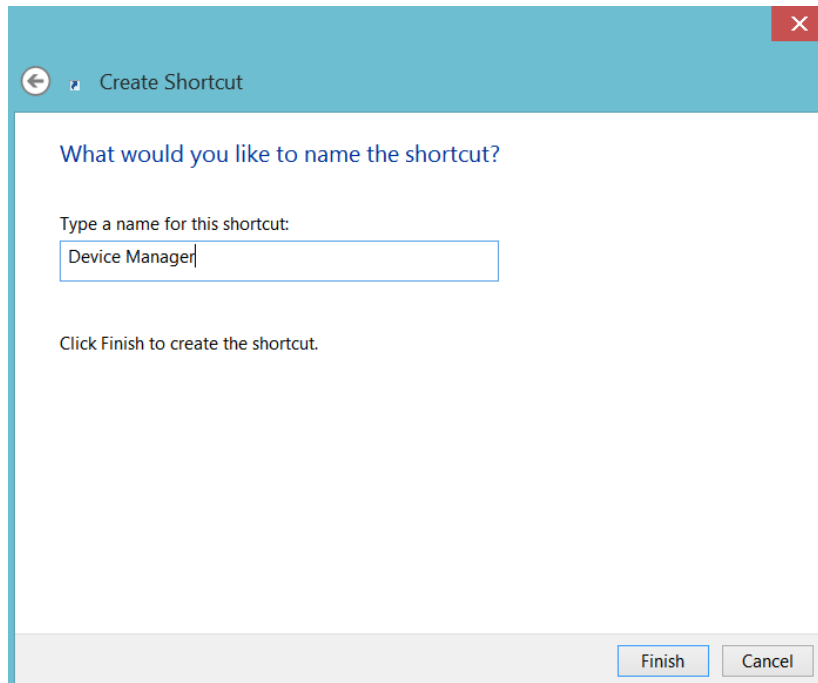
# Creating Device Manager Shortcut

---

- I. Right-click on desktop → **New** → **Shortcut**.
- II. Type **devmgmt.msc** for the location of the item



- III. Change the name to **Device Manager** and select **Finish**



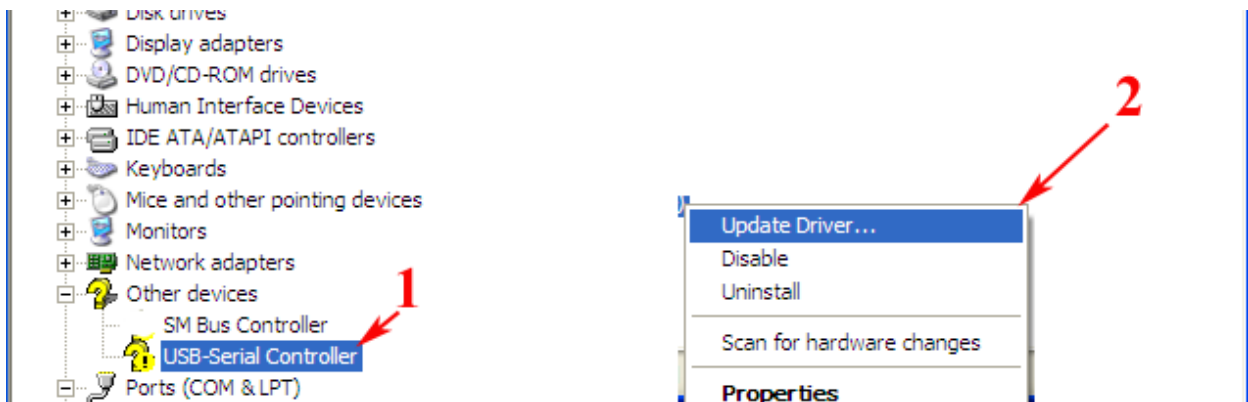
# Windows XP – Manual Driver Install

1. Locate and download the Prolific USB-to-Serial drivers (EDI model number: EDV3150)

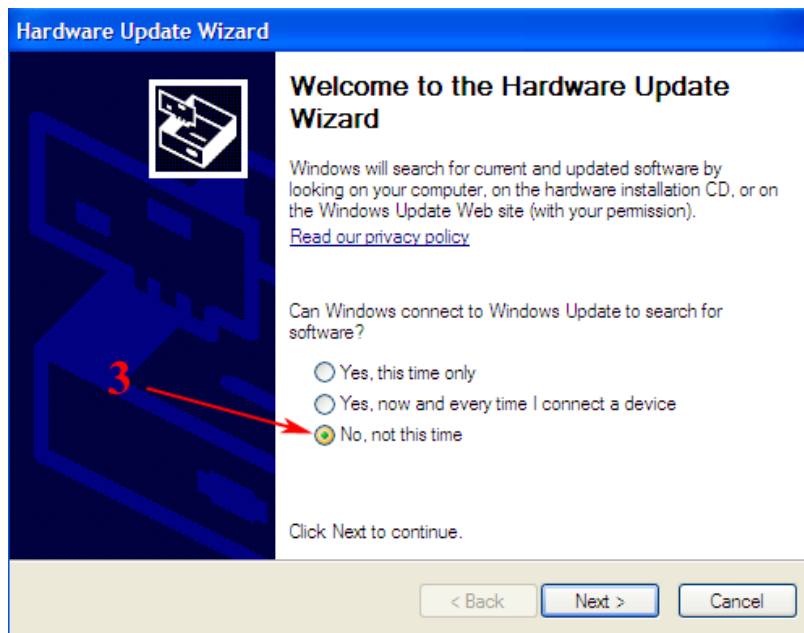
Direct Link:

<http://edisupport.helpserve.com/Knowledgebase/Article/View/111/17/edv3150-usb-to-serial-adapter-driver>

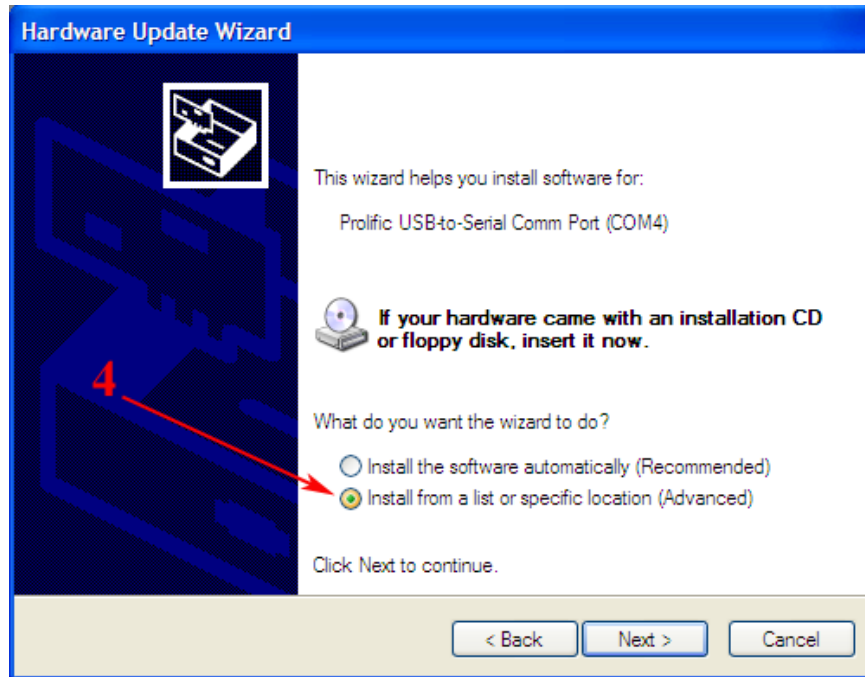
- A. Download attachment: **EDV3150 Drivers**
2. Extract the contents of the .zip file to a new folder.
  3. Disconnect the serial-to-USB adaptor and reconnect it to the display.
  4. Open device manager. Go to **Start** → **Run**. Type **devmgmt.msc** and select **OK**
    - A. Locate the adaptor in the device manager, right click and select **Update Driver**.  
May be listed in the 'Ports (Com & LPT)' or 'Other devices' section.



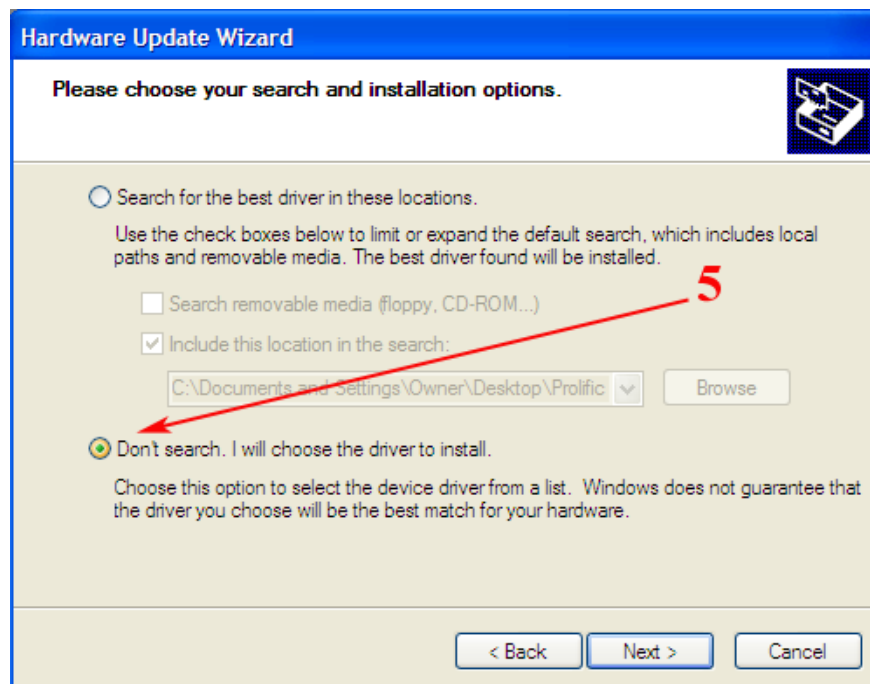
- B. Select 'No, not this time' in the hardware Update Wizard and click **Next**.



- C. Select 'Install from a list or specific location (Advanced)' and click **Next**

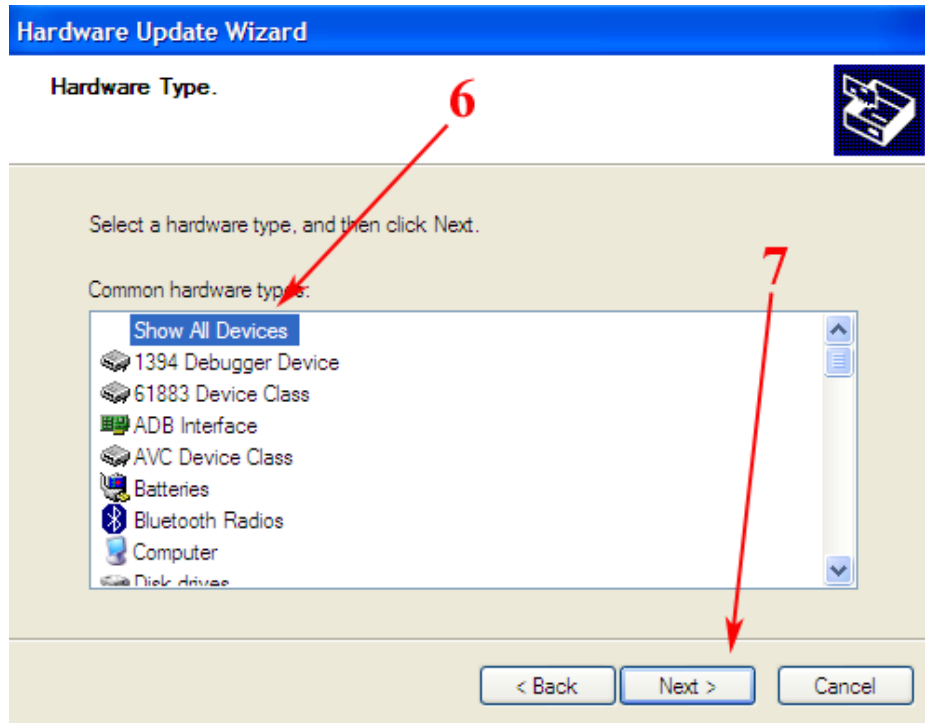


- D. Select 'Don't search. I will choose the driver to install.' and click **Next**.

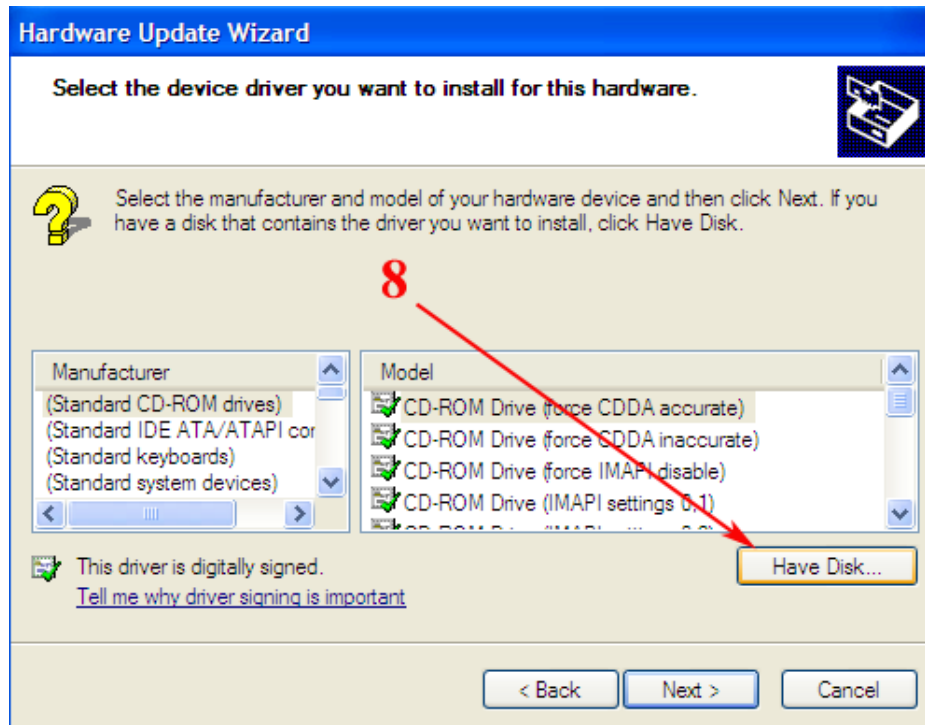




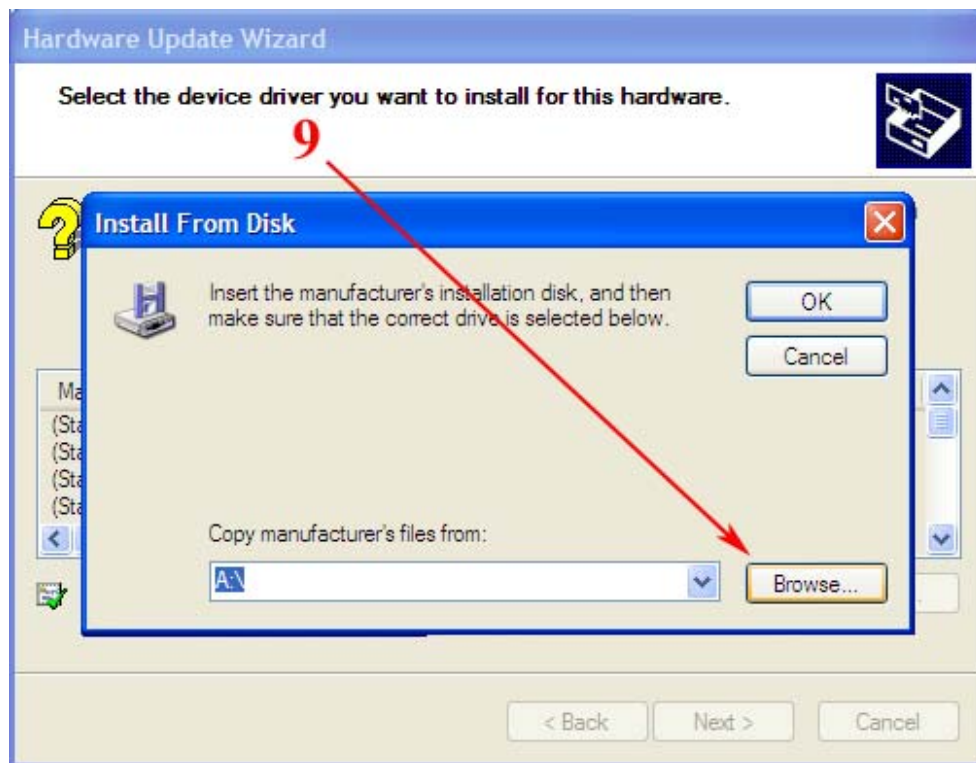
E. Highlight 'Show All Devices' and click **Next**.



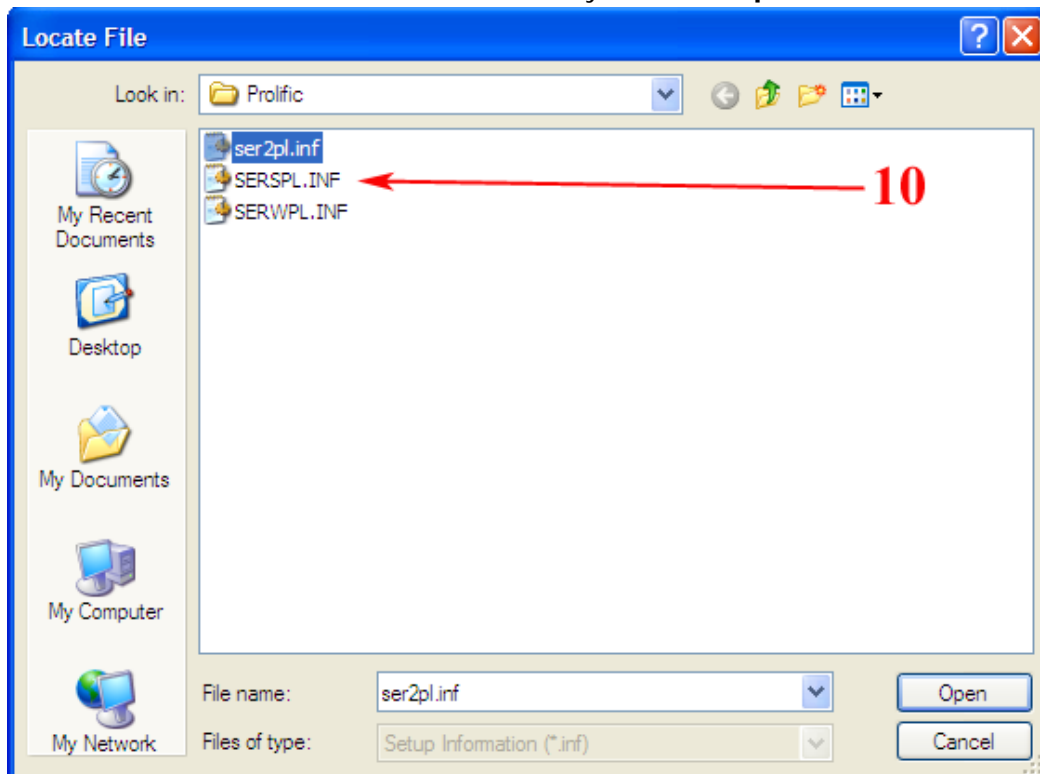
F. Select **Have Disk**



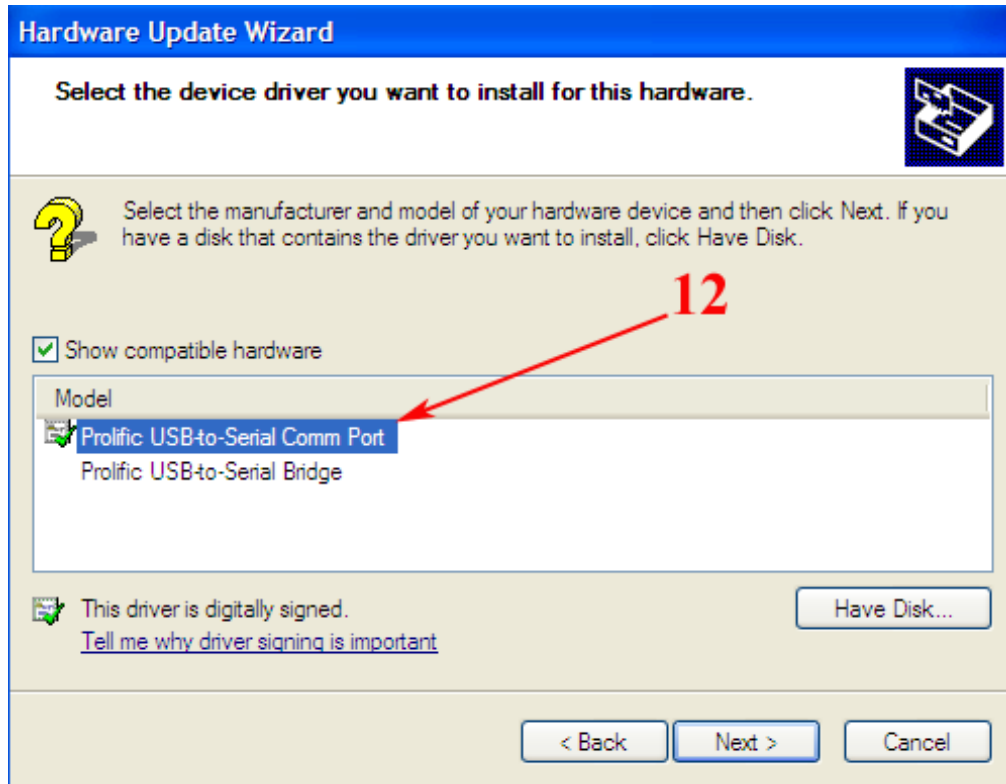
G. Select **Browse** and navigate to the new folder that the drivers were extracted to.



H. Select **SERSPL.INF** from the directory and click **Open**



- I. Highlight the model listing that is 'digitally signed' (Has icon to the left of it) and click **Next**.



- J. The Hardware Update Wizard will now install the drivers, if a prompt asks to install the driver select 'Continue Anyway' and wait for it to install.

Once complete, the Prolific Serial-to-USB adaptor will be listed in the 'Ports' section of Device Manager.

The communication port (Com#) will be in parenthesis next to the adapter in the Device Manager. Set this Com. Port number in the communication settings of the display software.

# Windows Vista,7 & 8 – Manual driver install

1. Locate and download the Prolific USB-to-Serial drivers (EDI model number: EDV3150)

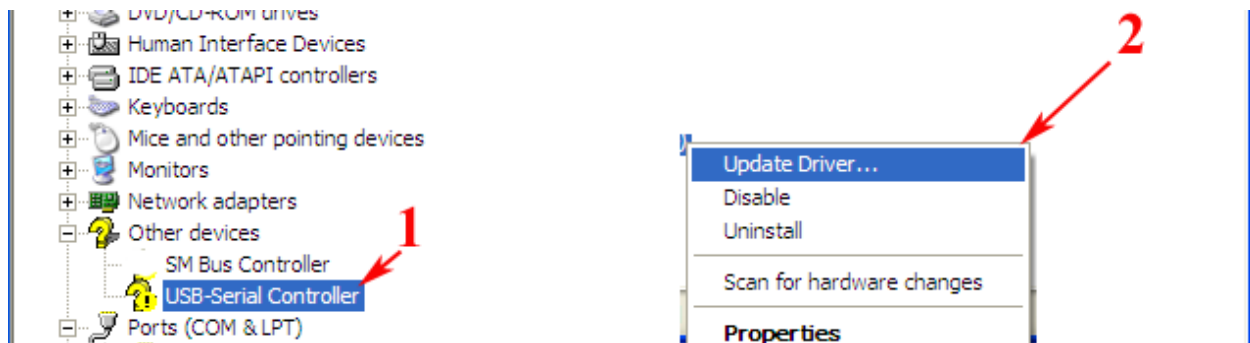
Direct Link: <http://edisupport.helpserve.com/Knowledgebase/Article/View/111/17/edv3150-usb-to-serial-adapter-driver>

- a) Download attachment: **EDV3150 Drivers.zip**
2. Extract the contents of the .zip file to a new folder.
  3. Windows Vista & 7: Click the Start button and type “**devmgmt.msc**” in the search box to open the Device manager.

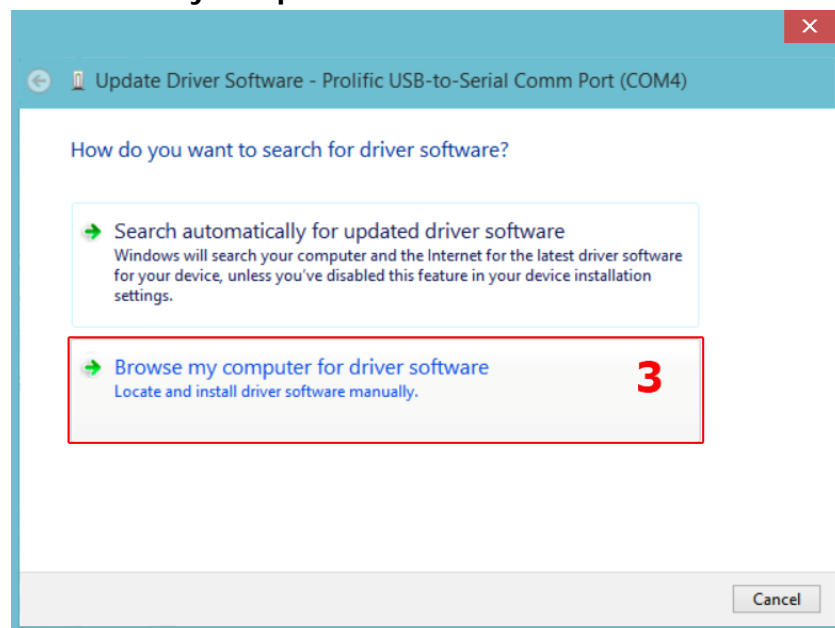
Windows 8: press **Windows + S** and search “**devmgmt.msc**”.

- a) Locate the USB-to-Serial adapter in the device manager. It will be listed under the ‘**Ports (COM & LPT)**’ section or under ‘**Other Devices.**’

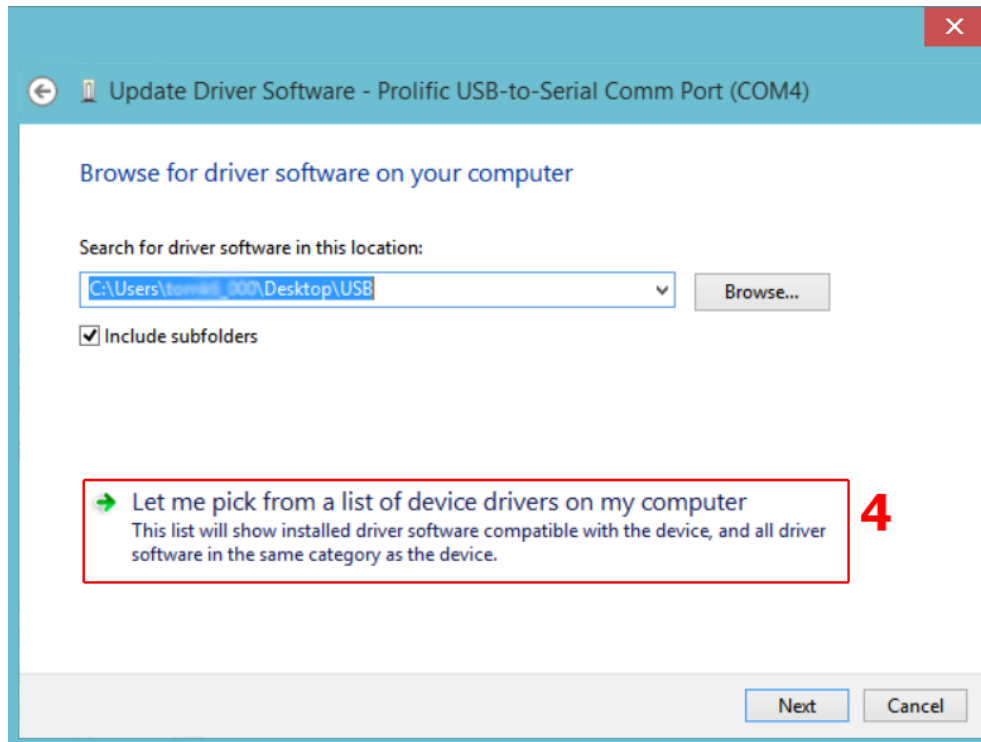
Right click on the adapter listed and select “**Update Driver Software**”



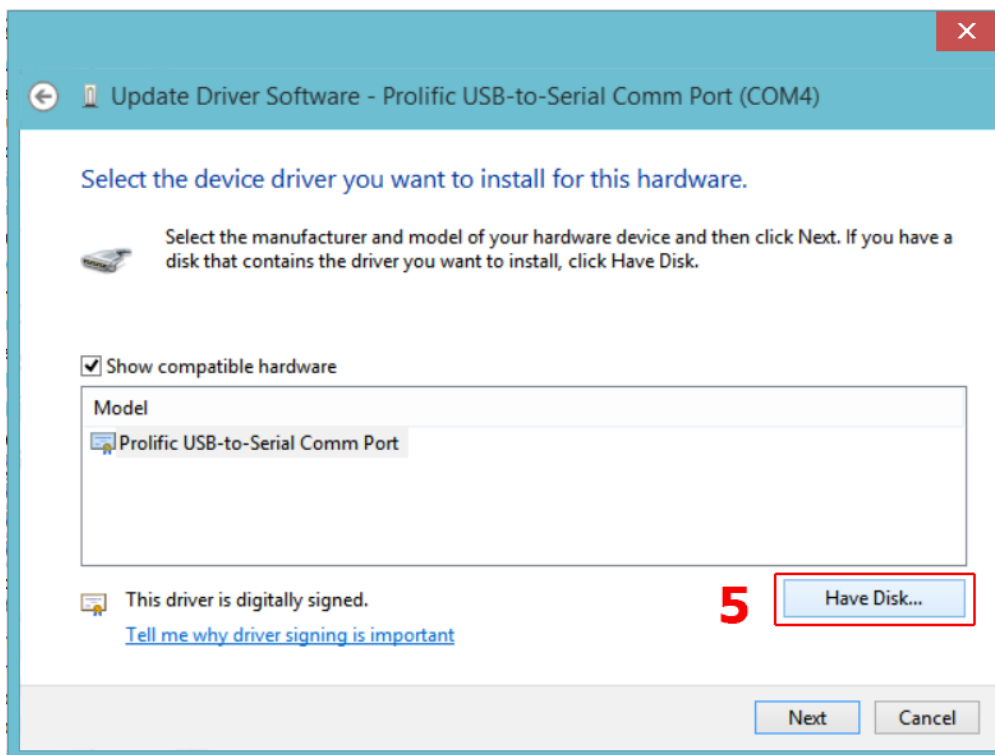
- b) Select “**Browse my computer for driver software**”



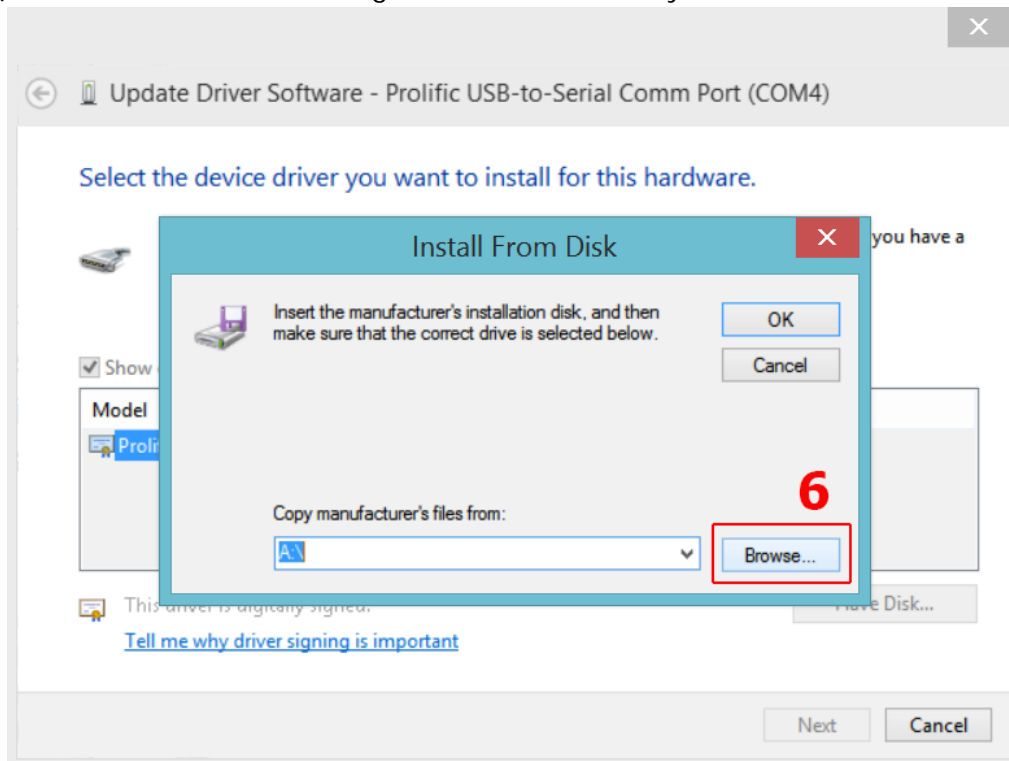
c) Select **“Let me pick from a list of device drivers on my computer”**



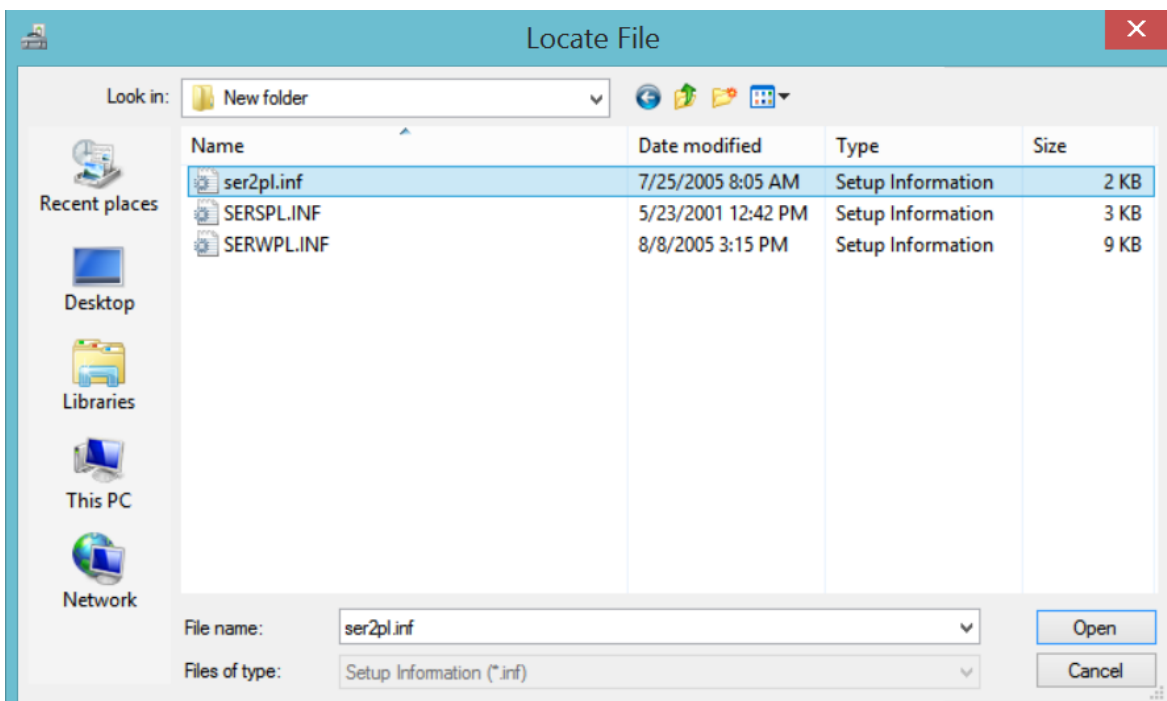
d) Select **“Have Disk”**



e) Select **"Browse"** and navigate to the folder that you extracted the driver to.



f) Select the **"ser2pl.inf"** file and click **Open**.



- g) The driver will now install. Once complete, go back to the device manager and look under the "Ports (Com & LPT) section for the Prolific Serial to USB adapter.

Take note of the communication port number (COM#) that is in parenthesis; that specific number will need to be set in the Communication Settings of the display software.

# Frequently Asked Questions

---

## 1. I am using a serial cable, not a serial-to-USB adaptor. How do I know what Com Port I am using?

If you are using a serial cable it will appear under the “Ports” section of Device Manager as “Communication Port (Com#).”

By default, the computer will assign the serial port to COM1 or COM3.

## 2. Do I have to verify the Com Port that is being used each time I communicate with my display?

The only time that you have to verify the Com Port is when you initially set the communication settings for the software or if you are using a serial-to-USB adaptor and have changed the USB port on your computer.

There are multiple USB ports on a computer and the operating system assigns each device that is connected to the computer a Com Port; therefore, if a USB cable is moved to a different port, the Com Port changes are well.

## 3. I plugged my USB-to-Serial cable into my computer and do not see it in the port section of device manager.

There are several variables that can prevent the serial-to-USB cable from appearing in the “Ports” section of Device Manager: the driver for the serial-to-USB cable is not installed, the wrong driver is installed or the serial-to-USB is damaged and/or malfunctioning.

To resolve the issue, plug the serial-to-USB cable into your computer and look through the device manager for a device with a “!” next to it (see Figure 1 below). If there is a device that has a yellow “!” next to it, then the device has a driver issue. Check the Table of Contents and follow the procedure to manually install the drivers for the device.

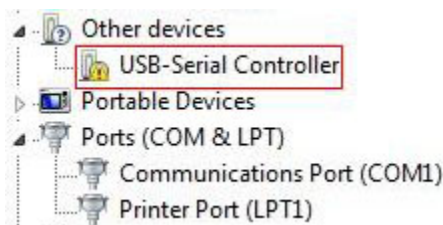


Figure 1

If there is no yellow “!”, then try using a different USB port on your computer to resolve the issue.



**4. There is a yellow “!” next to an unknown device in the “Ports” section of Device Manager and nothing else is listed.**

The incorrect driver has been installed for the serial-to-USB cable or no driver has been installed. Install the driver from the CD that came with the serial-to-USB cable or by downloading the drivers from the manufacturer’s website.

**5. I purchased a Serial-to-USB adaptor from Electronic Displays Incorporated. Where would I find the driver for the cable?**

The driver can be located on our support website:

**Direct Link:** <http://edisupport.helpserve.com/Knowledgebase/Article/View/111/17/edv3150-usb-to-serial-adapter-driver>