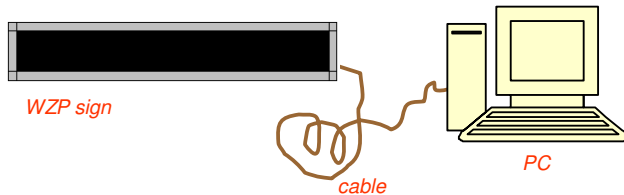


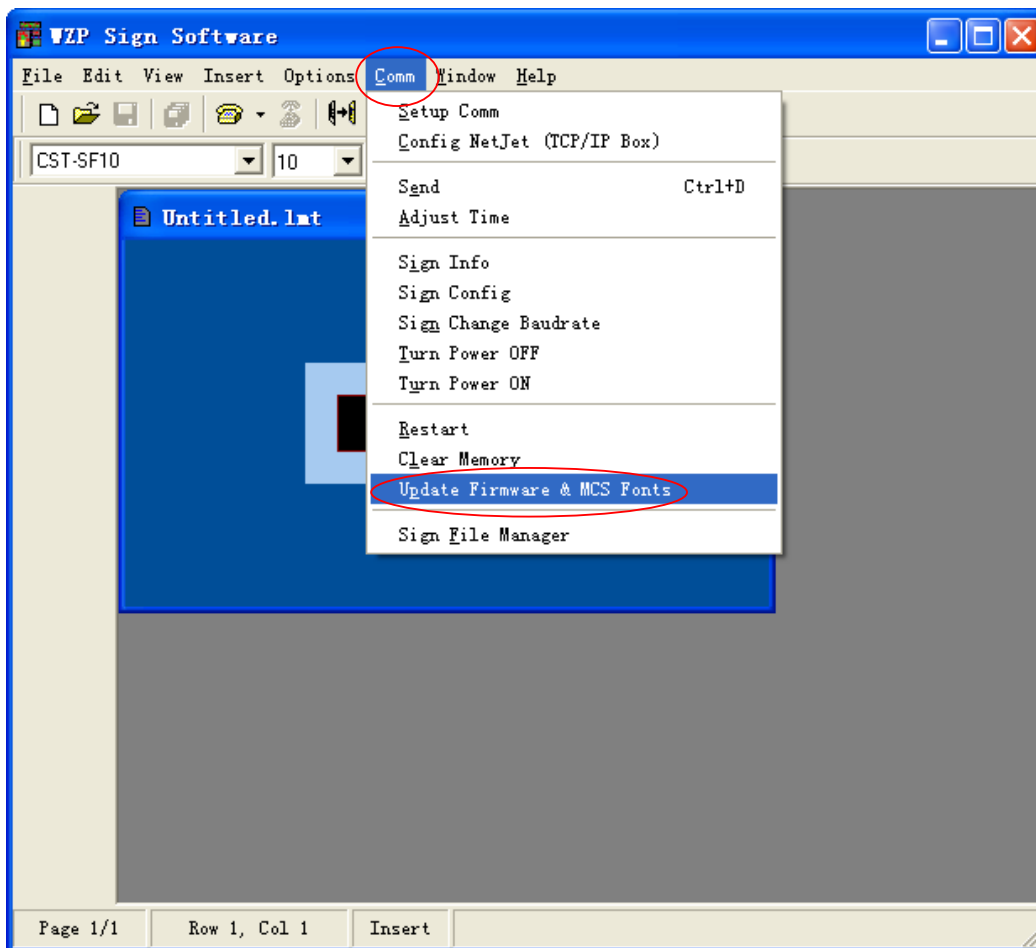
Wzp2006 is upgraded to support custom fonts using with MCS protocol.

WARNING: Do not turn off the power while updating firmware. The sign will automatically restart after it finish.

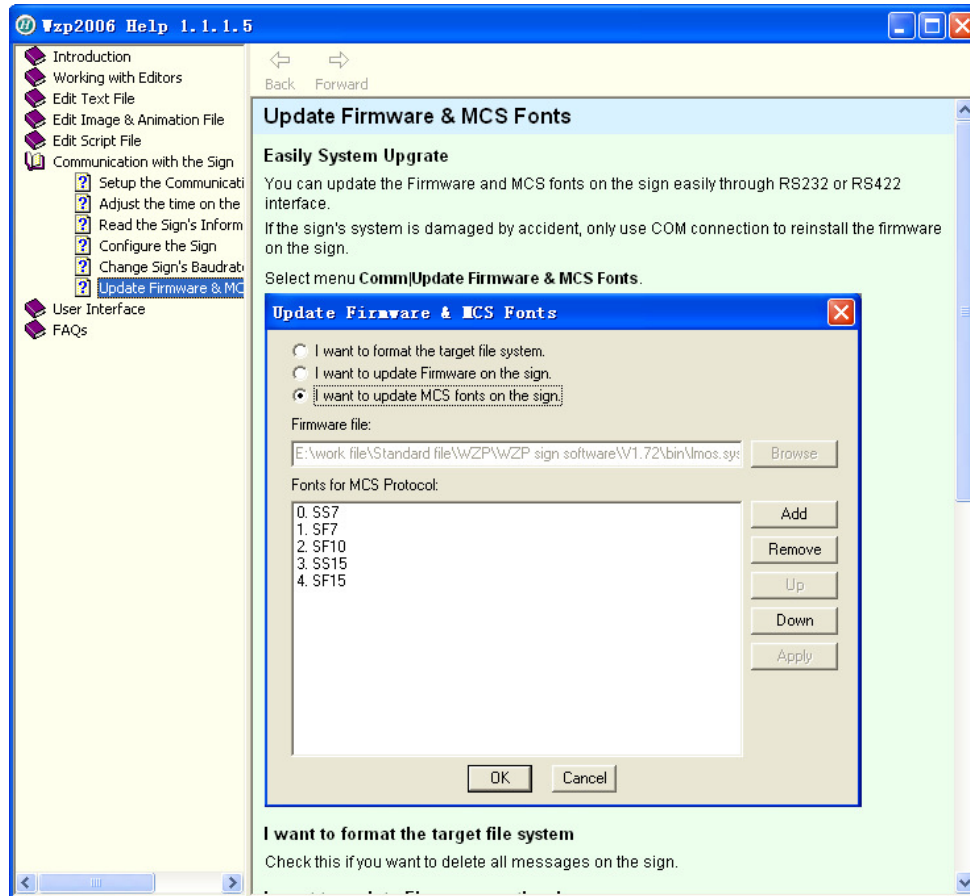
Make sure the PC have been linked to the WZP sign as below:



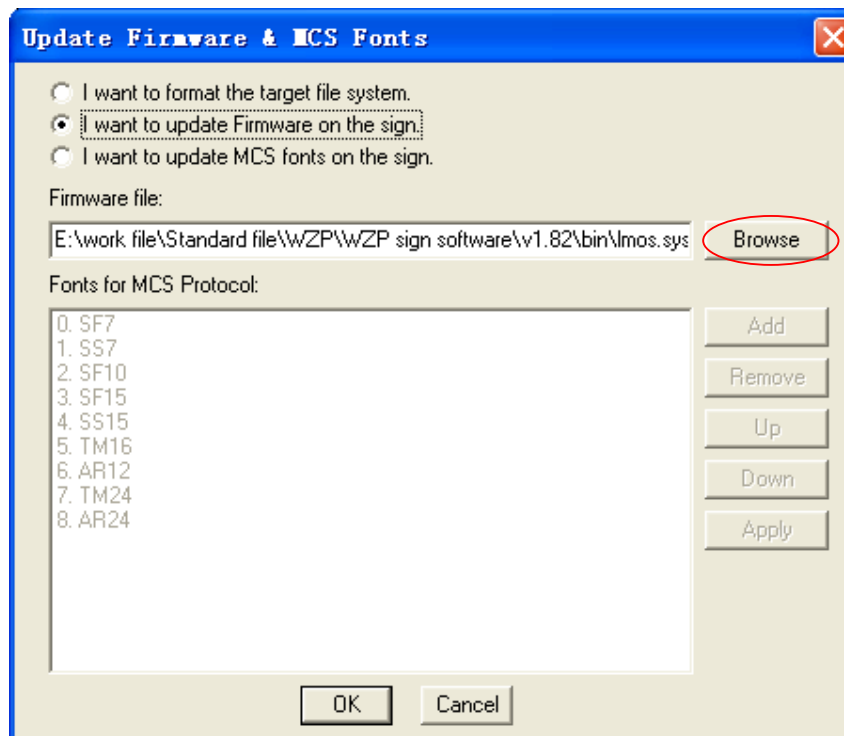
Run Wzpsoft.exe to launch the [Wzp sign software](#). (Note: If wants to get “Update Firmware & MCS Font” function, user needs to modify “config.ini” file.)



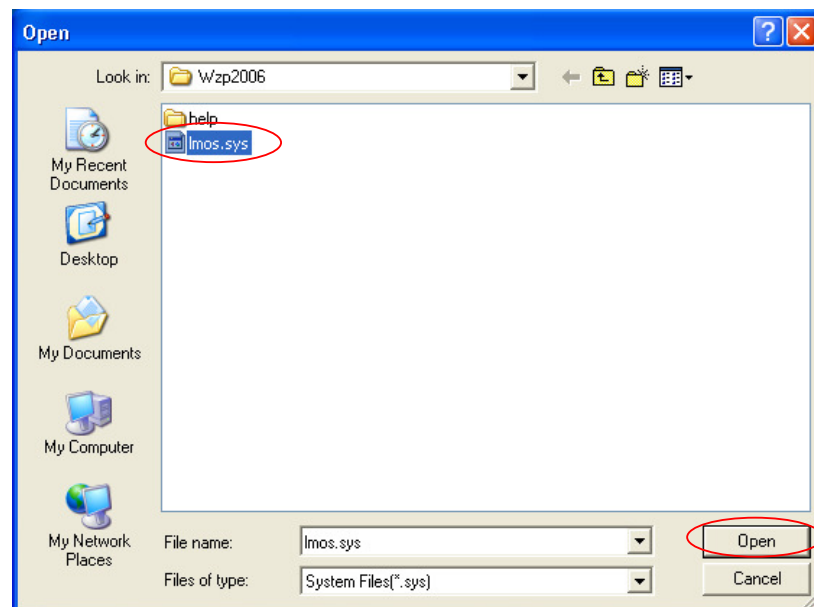
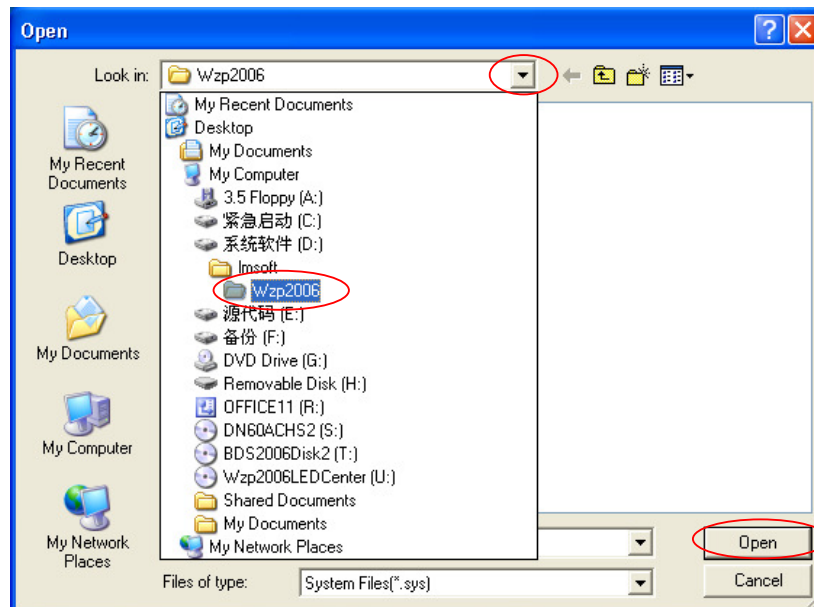
Choose menu [Help | Content](#) to learn more about updating firmware.



Choose menu **Comm | Update Firmware & MCS Fonts.**

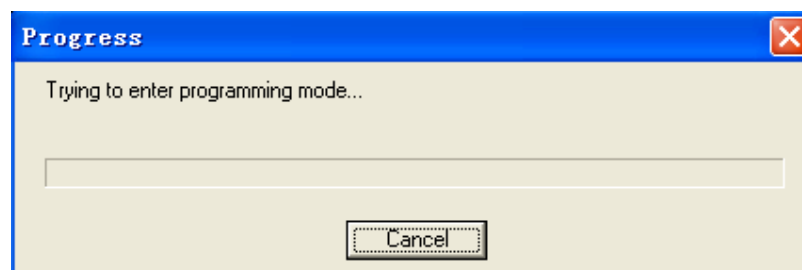


Select “I want to update Firmware on the sign” and then click **Browse** button.

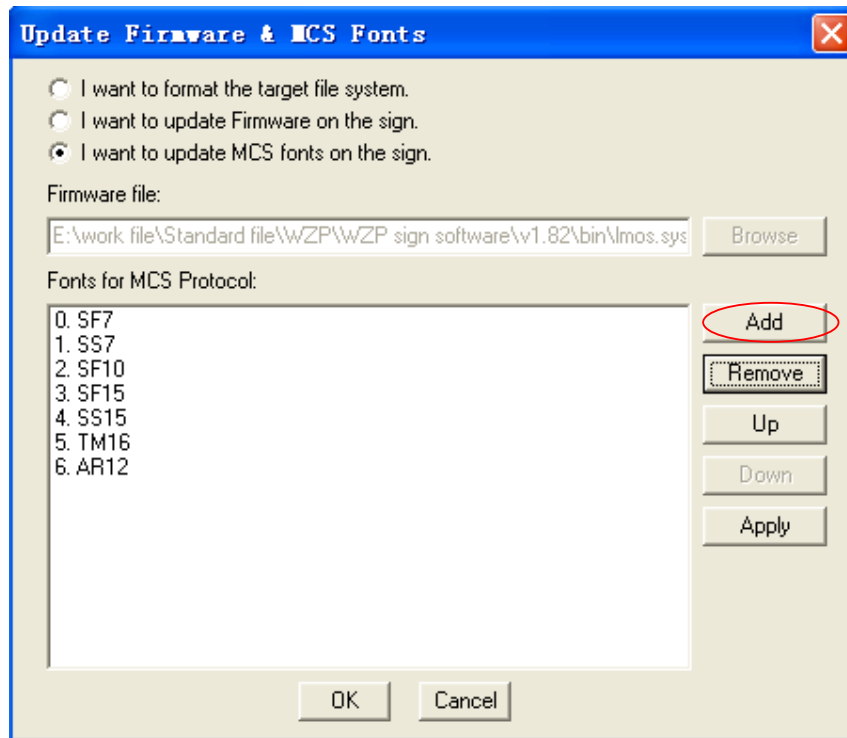


Select the new OS file “**Imos.sys**” then click **Open**.

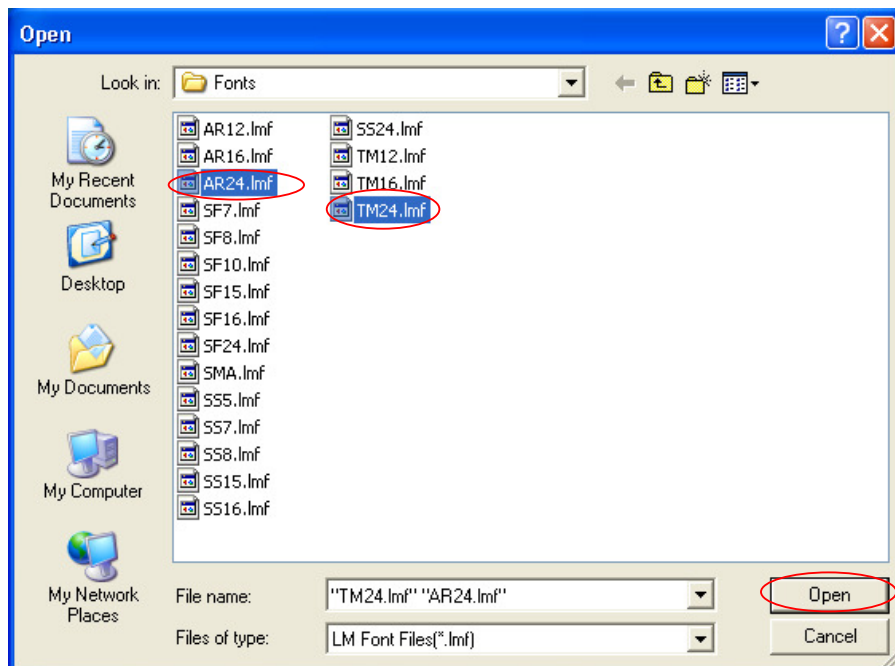
Click **OK** button.



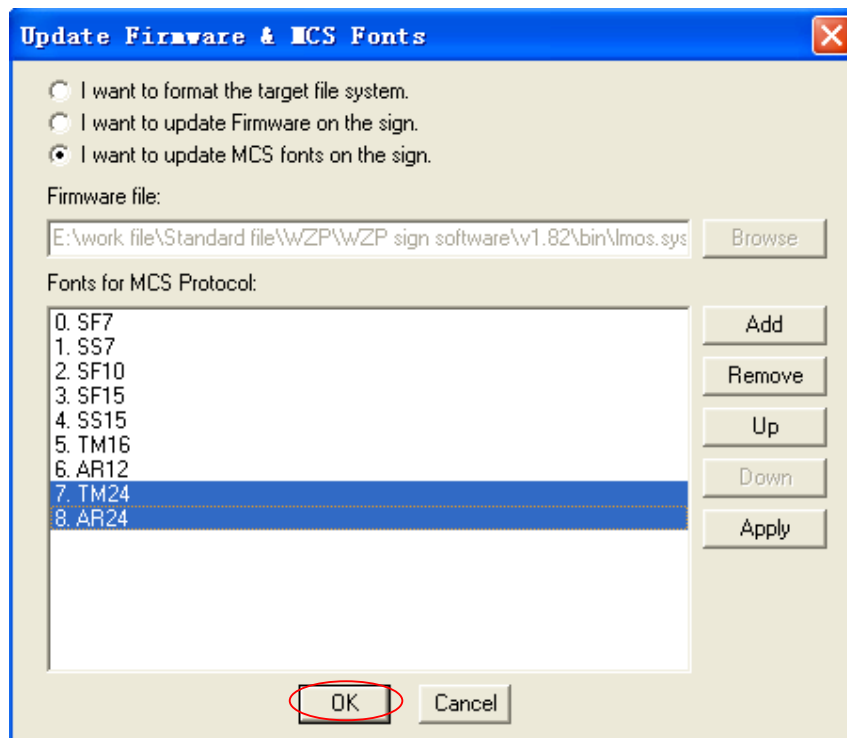
Select “I want to update MCS fonts on the sign”



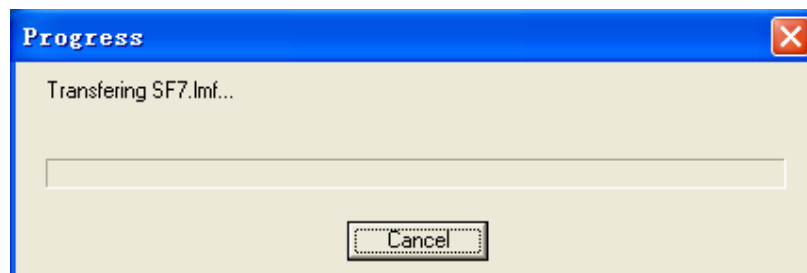
Click Add.



Select the font files “AR24.lmf” “TM24.lmf” (hold down <Ctrl> for multi-selection), and then click Open.



Now the new fonts **AR24** and **TM24** are in the fonts list, indexing from 7 to 8. Click **OK**.

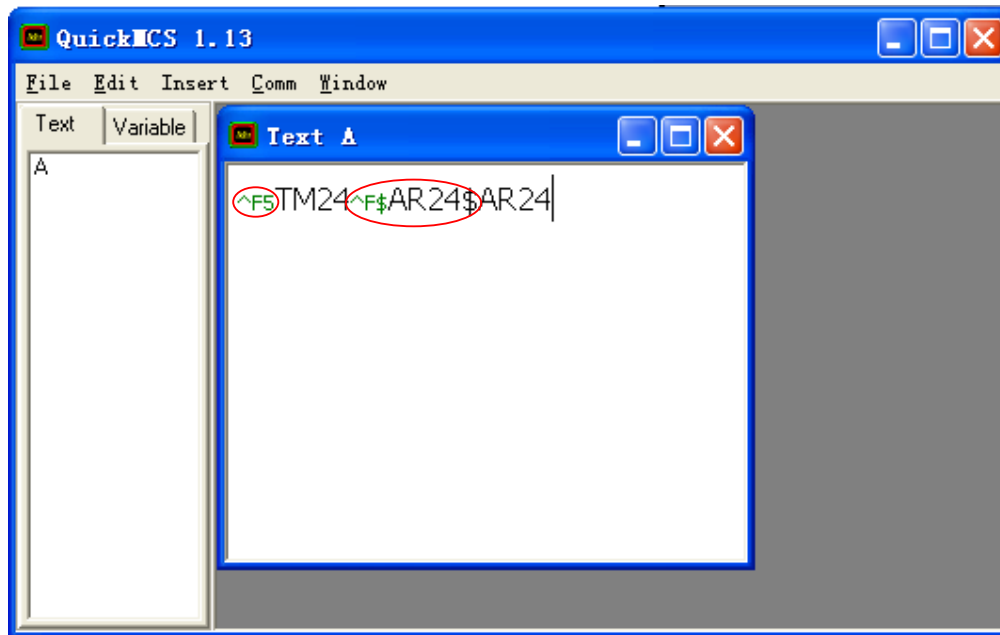


When these progresses finished, the sign will display “Writing system files...”



WARNING: Do not turn off the power while writing system files. The sign will automatically restart after it finish. Only the JTAG connection is available when the sign is damaged by improper updating operation.

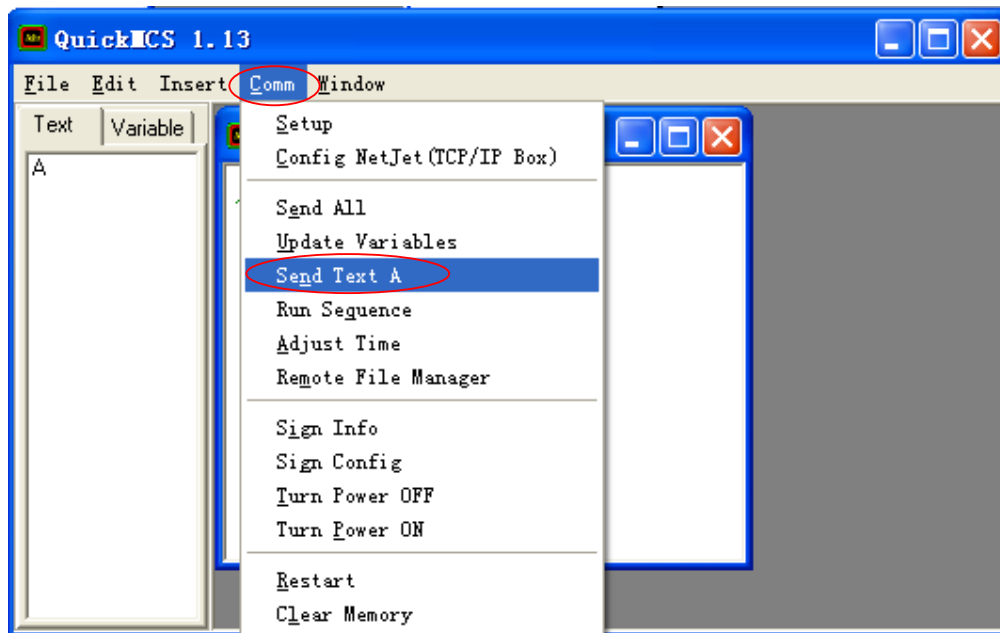
Run the QuickMCS.exe, edit text A as below:



You can use either ^F5 or ^F\$TM24\$ to specify using font TM24.

You can use either ^F6 or ^F\$AR24\$ to specify using font AR24.

Select menu **Comm | Send Text A**.



The sign will give a short beep and then display text A with new fonts **TM24** and **AR24**.



(End)