

Appendix C

DIP Switch Settings for 7SEG0047.mot

This program can be run on either a 2 1/4" bar-segment board shown in Figure 1 or on a 4" bar-segment board shown in Figure 2. Each of these boards has two 8-position DIP switches that are used to control the options of the program. One of these DIP switches is labeled the "ADDRESS" switch and the other is labeled the "FUNCTION" switch. With this program, these switches are read 'on-the-fly' so there is no need to turn power off each time that they are changed. The following pages detail the purpose of each of these switches.

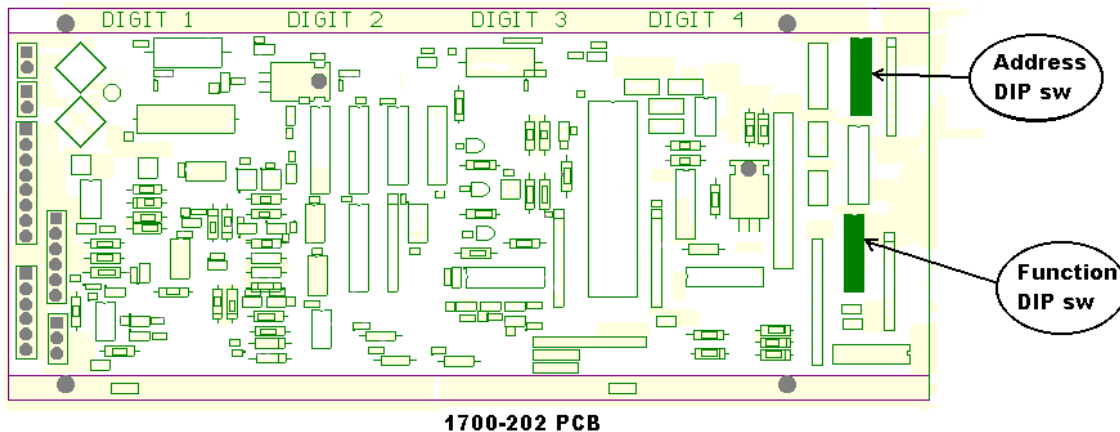


Figure 1

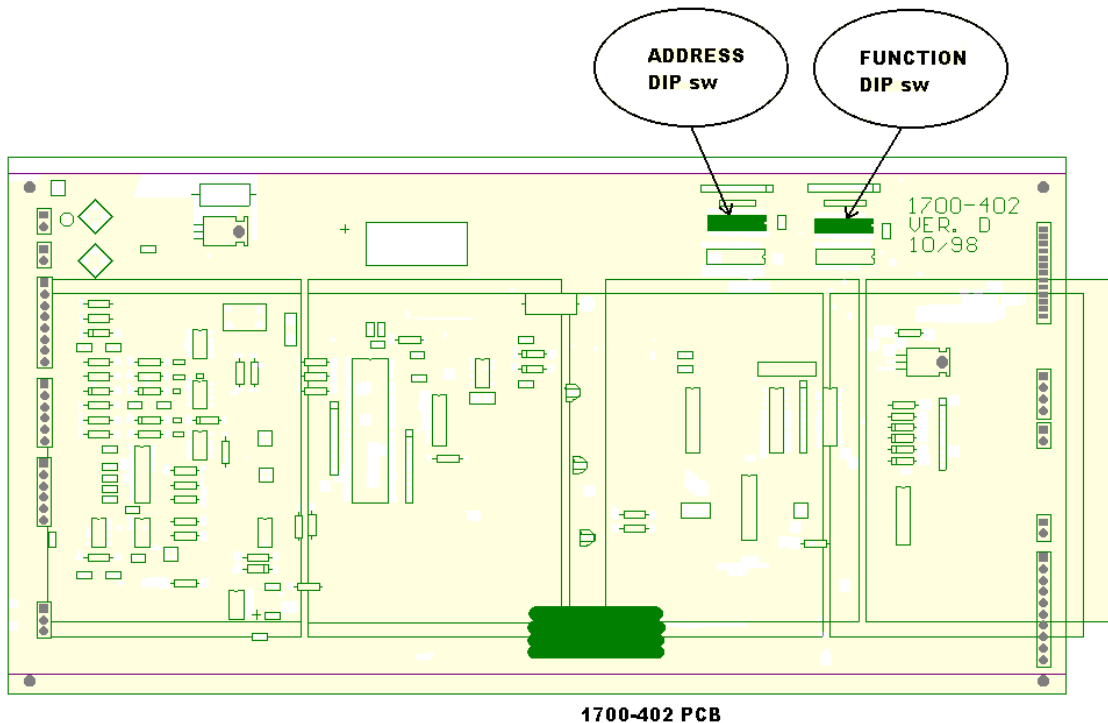


Figure 2

Appendix C

DIP Switch Settings for 7SEG0047.mot

“ADDRESS” Switch:

Switches 3 through 8 are used in binary fashion to specify the display rate. Presently, only four standard rates are defined. Other combinations of switches can be used to provide custom display rates in the future based on specific customer's requirements. Display rate selections are shown in Table 1. The unit is set to rate 1, pulses-per-minute at the factory unless the customer has specified otherwise.

‘ADDRESS’ DIP SWITCH							DISPLAY
RATE	SW 8	SW 7	SW 6	SW 5	SW 4	SW 3	
0	OFF	OFF	OFF	OFF	OFF	OFF	pulses-per-second
1	OFF	OFF	OFF	OFF	OFF	ON	pulses-per-minute
2	OFF	OFF	OFF	OFF	ON	OFF	pulses-per-hour
3	OFF	OFF	OFF	OFF	ON	ON	pulses-per-day
4	OFF	OFF	OFF	ON	OFF	OFF	not defined
5	OFF	OFF	OFF	ON	OFF	ON	not defined
6	OFF	OFF	OFF	ON	ON	OFF	not defined
7	OFF	OFF	OFF	ON	ON	ON	not defined
8	OFF	OFF	ON	OFF	OFF	OFF	not defined
15	OFF	OFF	ON	ON	ON	ON	not defined
16	OFF	ON	OFF	OFF	OFF	OFF	not defined
17	OFF	ON	OFF	OFF	OFF	ON	not defined
31	OFF	ON	ON	ON	ON	ON	not defined
32	ON	OFF	OFF	OFF	OFF	OFF	not defined
33	ON	OFF	OFF	OFF	OFF	ON	not defined
63	ON	ON	ON	ON	ON	ON	not defined

Table 1

‘ADDRESS’ switches 1 and 2 specify how often the displayed value will be changed. Update rate selections are shown in Table 2. The unit is set to update at 1 minute intervals at the factory unless the customer has specified otherwise.

‘ADDRESS’		UPDATE RATE
SW 2	SW 1	
OFF	OFF	once per second
OFF	ON	once per 10 seconds
ON	OFF	once per 30 seconds
ON	ON	once per minute

Table 2

Appendix C

DIP Switch Settings for 7SEG0047.mot

“FUNCTION” Switch:

Switches 1, 2, and 3 are used to specify how many digits were supplied on you display. These switches were set at the factory and should not be changed. The possible combinations of these switches are shown in Table 3.

‘FUNCTION’ DIP			DISPLAY SIZE
SW 3	SW 2	SW 1	
OFF	OFF	OFF	2 digits (or 1 digit)
OFF	OFF	ON	4 (or 3) digits
OFF	ON	OFF	6 (or 5) digits
OFF	ON	ON	8 (or 7) digits
ON	OFF	OFF	10 (or 9) digits
ON	OFF	ON	12 (or 11) digits
ON	ON	OFF	14 (or 13) digits
ON	ON	ON	16 (or 15) digits

Table 3

Many of our customers have requested that the displayed value be “moved over” to the left with “zero’s” appended to the right end of the display. Switches 4 and 5 on the “FUNCTION” DIP switch will provide these “trailing” zero’s. The four possible combinations are shown in Table 4 below.

‘FUNCTION’		‘TRAILING’ ZERO’S
SW 5	SW 4	
OFF	OFF	None
OFF	ON	One
ON	OFF	Two
ON	ON	Three

Table 4

Switches 6, 7, and 8 are not currently in use. These switches can be ON or OFF.